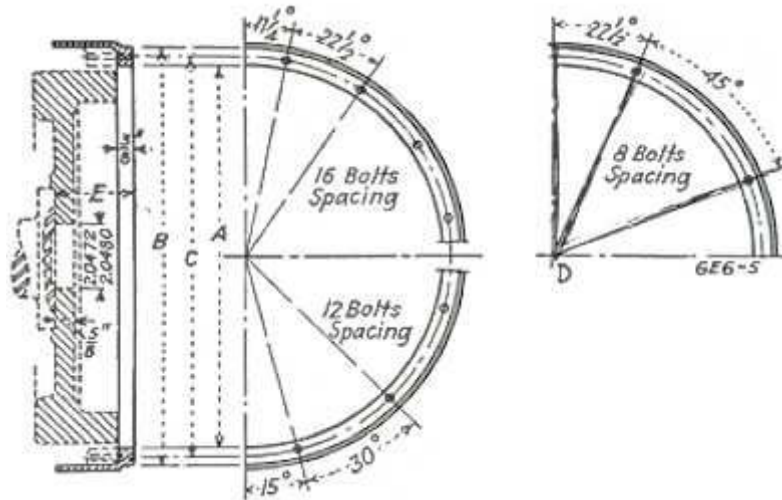


ENGINE FLYWHEEL HOUSING

SAE Standard



FLYWHEEL HOUSING DIMENSIONS

SAE Size No.	A	B	C	D	Depth E	Cap Screw*	
						No.	Size
00	31	343/4	331/2	35	315/16	16	1/2-13
0	251/2	28	263/4	281/2	315/16	16	1/2-13
1/2	23	251/2	243/8	---	---	12	17/32
1	201/8	213/4	207/8	---	315/16	12	3/8-16
2	175/8	191/4	183/8	---	315/16	12	3/8-16
3	161/8	173/4	167/8	---	315/16	12	3/8-16
4	141/4	157/8	15	---	315/16	12	3/8-16
5	123/8	14	131/8	---	213/16	8	3/8-16
6	101/2	121/8	111/4	---	213/16	8	3/8-16

*Cap Screws shall be threaded in accordance with the Free Fit (Class 2) Tolerances of the SAE Standard for Screw Threads and shall be equally spaced in each side of the vertical center line.

The Tolerance for the flywheel housing bore shall be plus 0.005 in. and minus 0.000 and the maximum eccentricity 0.005 in. (indicator reading, 0.010 in.); except for the No. 0 and 00 sizes, which shall be plus 0.010 in. and minus 0.000.

The maximum deviation of the face of the flywheel housing flange from its true position, when the housing is rotated on its axis, shall be 0.003 in. (indicated runout, 0.006 in.).

Reprinted through the courtesy of the S.A.E., New York City.